

Connector~Tech

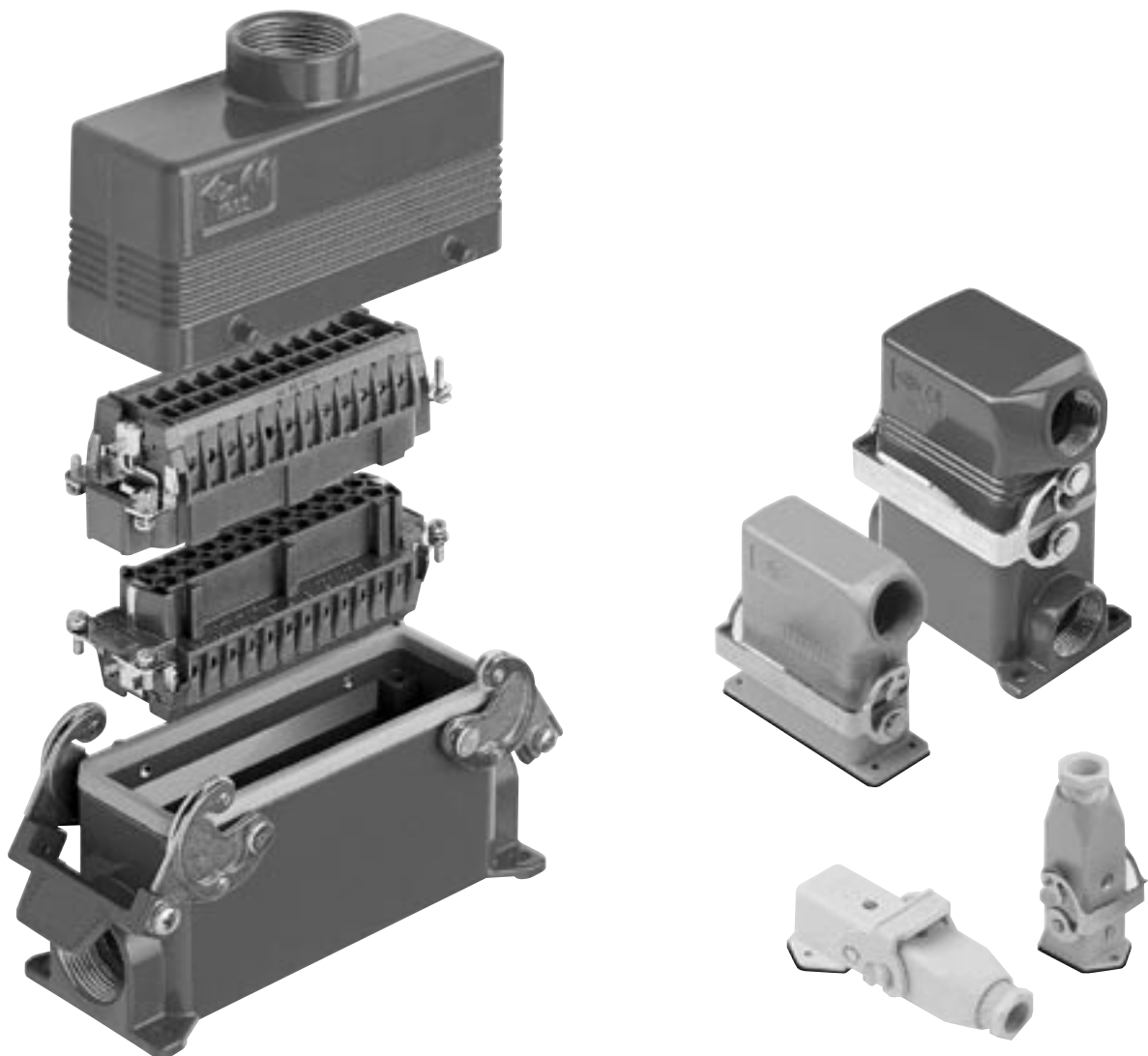
www.connectortech.com.au

Providing

Harsh Environment Connector

SOLUTIONS

Rectangular IP65 Multipole Connectors



Connector~Tech is a Division of:
Colourview Electronics (QLD) Pty Ltd (ABN 99 065 191 424)
Unit 2, 8 Colebard St East, Acacia Ridge Qld 4110. PO Box 285 Archerfield Qld 4108
Telephone: +61 7 3275 3188 Freecall 1800 803 166 Fax: +61 7 3275 3033
Email info@connectortech.com.au Web www.connectortech.com.au

Contents

CN	6	Pin 16 amp 400 volt	Page 3
CDD	24	Pin 10 amp 250 volt	“ “
CN	10	Pin 16 amp 400 volt	Pages 4 & 5
CDD	42	Pin 10 amp 250 volt	“ “
CN	16	Pin 16 amp 400 volt	Pages 6 & 7
CD	40	Pin 10 amp 250 volt	“ “
CDD	72	Pin 10 amp 250 volt	“ “
CP	6	Pin 35 amp 400 volt	“ “
CX	4	Pin 80 amp 690 volt	“ “
CX	4	Pin 80 amp 690 volt + 2 Pin 16 amp 400 volt	“ “
CN	24	Pin 80 amp 400 volt	Pages 8 & 9
CD	64	Pin 10 amp 250 volt	“ “
CDD	108	Pin 10 amp 250 volt	“ “
CX	4	Pin 80 amp 690 volt + 8 Pin 16 amp 400 volt	“ “
CN	32	Pin 16 amp 400 volt	Page 10
CD	80	Pin 10 amp 250 volt	“ “
CDD	144	Pin 10 amp 250 volt	“ “
CN	48	Pin 16 amp 400 volt	Page 11
CD	108	Pin 10 amp 250 volt	“ “
CDD	216	Pin 10 amp 250 volt	“ “
Crimp Pins for CD & CDD inserts			“ “
CDA	10	Pin 16 amp 400 volt	Page 12
CD	15	Pin 10 amp 250 volt	“ “
CDA	16	Pin 16 amp 400 volt	“ “
CD	25	Pin 10 amp 250 volt	“ “
CDD	38	Pin 10 amp 250 volt	“ “
CDA	32	Pin 16 amp 400 volt	Page 13
CD	50	Pin 10 amp 250 volt	“ “
CDD	56	Pin 10 amp 250 volt	“ “
Accessories			
		Trumpet Glands	“ “
		HSK-Flex & HSK-K Cable Glands	“ “
		Crimp Tool	“ “
		Extraction and Insertion Tools	“ “
CK	3	Pin & E10 amp 250 volt	Page 14
CK	4	Pin & E10 amp 250 volt	“ “
CD	7	Pin & E10 amp 250 volt	“ “
CD	8	Pin 10 amp 50 volt	“ “

CH - CA Enclosures

Size 44.27



CHI 06L



CHI 06 LS



CHI 06 LCS



CHP 06 L 1 x PG 16
MHP 06 L220 2 x M 20



CHP 06 LS2 2 x PG 16
MHP 06 LS220 2 x M 20



CHV 06 L13 PG 13.5
CHV 06 L16 PG 16
MHV 06 L20 M 20
MHV 06 L25 M 25



CHO 06 L13 PG 13.5
CHO 06 L16 PG 16
MHO 06 L20 M 20
MHO 06 L25 M 25



CHC 06LG



CHC 06L



CHV 06 LG PG16
MHV 06 LG25 M 25



CHV 06 LX16 PG 16
MHV 06 LX25 M 25



CHO 06 LX16 PG 16
MHO 06 LX25 M 25

Male Inserts

CNM 06 Q 6 Pin 16 amp 400 volt
CDDM 24 24 Pin 10 amp 250 volt (crimp pins)

For crimp Pins refer to page 11

Female Inserts

CNF 06 Q 6 Pin 16 amp 400 volt
CDDF 24 24 Pin 10 amp 250 volt (crimp pins)

CH -CA Enclosures

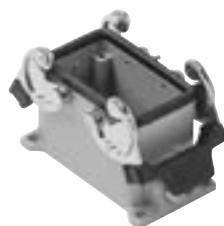
Size 57.27



CHI 10



CHI 10 CS



CHP 10 1 x PG 16
MHP 10.225 2 x M 25



CHP 10 CS 1 x PG 16
MHP 10 CS220 2 x M 20



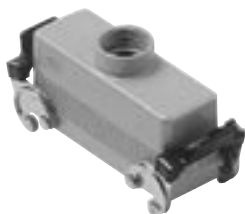
CHV 10 PG 16
MHV 10.20 M 20
MAV 10.32 M32



CHO 10 PG 16
MHO 10.20 M 20
MAO 16.32 M 32



CHV 10 G PG 16
MHV 10 G25 M 25



CHV 10 X PG 16
MHV 10 X20 M 20
MAV 10 X32 M32



CHO 10 X PG 16
MHO 10 X20 M 20



CHC 10 G



CHC 10

Inserts refer to page 5.

CH -CA Enclosures

Size 57.27



CHI 10 L



CHI 10 LS



CHP 10 L 1 x PG 16
MHP 10 L220 2 x M 20



CHP 10 LS 1 x PG 16
MHP 10 LS220 2 x M 20



CHV 10 L PG 16
MHV 10 L20 M 20
MAV 10 L32 M32



CHO 10 L PG 16
MHO 10 L20 M 20
MAO 10 L32 M 32



CHV 10 LG PG 16
MHV 10 LG25 M 25



CHC 10 LG



CHC 10 L

Male Inserts

CNM 10 Q 10 Pin 16 amp 400 volt
CDDM 42 42 Pin 10 amp 250 volt (crimp)

For crimp Pins refer to page 11

Female Inserts

CNF 10 Q 10 Pin 16 amp 400 volt
CDDF 42 42 Pin 10 amp 250 volt (crimp)

CH - CA Enclosures

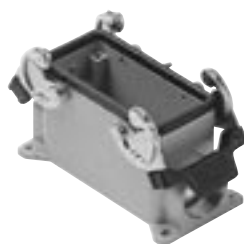
Size 77.27



CHI 16



CHI 16 CS



CHP 16 1 x PG 16
MHP 16.225 2 x M 25



CHP 16 CS2 2 x PG16
MHP 16 CS225 2 x M 25



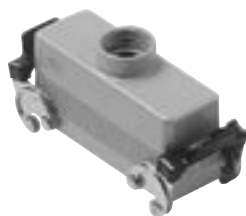
CHV 10 PG 21
MHV 16.25 M 25
MAV 16.32 M 32



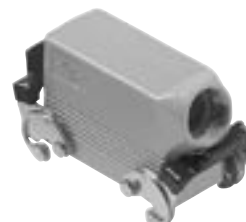
CHO 16 PG 21
MHO 16.25 M 25
MAO 16.32 M 32



CHV 16 G PG 21
MHV 16 G 32 M 32
MAV 16 G 32 M 32



CHV 16 X PG 21
MHV 16 X25 M 25



CHO 16 X PG 16
MHO 16 X25 M 25



CHC 16 G



CHC 16

Inserts refer to page 7.

CH - CA Enclosures

Size 77.27



CHI 16 L



CHI 16 LS



CHP 16L 1 x PG 21
MHP 16 L225 2 x M 25



CHP 16 LS 1x PG 21
MHP 16 LS225 2 x M 25



CHV 16 L PG 21
MHV 16 L25 M 25
MAV 16 L32 M32



CHO 16 L PG 21
MHO 16 L25 M 25
MAO 16 L40 M 40



CHV 16 LG PG 16
MHV 16 LG25 M 25



CHC 16 LG



CHC 16 L

Male Inserts

CNM 16 Q	16 Pin 16 amp 400 volt
CDM 40	40 Pin 10 amp 250 volt (crimp)
CDDM 72	72 Pin 10 amp 250 volt (crimp)
CPM 06	6 Pin 35 amp 400 volt
CXM 4/0	4 Pin 80 amp 690 volt
CXM 4/2	4 Pin 80 amp 690 volt + 2 pin 16 amp 400 volt

Female Inserts

CNF 16 Q	16 Pin 16 amp 400 volt
CDF 40	40 Pin 10 amp 250 volt (crimp)
CDDF 72	72 Pin 10 amp 400 volt (crimp)
CPF 06	6 Pin 35 amp 400 volt
CXF 4/0	4 Pin 80 amp 690 volt
CXF 4/2	4 Pin 80 amp 690 volt + 2 pin 16 amp 400 volt

For crimp Pins refer to page 11

CH - CA Enclosures

Size 104.27



CHI 24



CHI 24 CS



CHP 24 1 x PG 21
MHP 24.225 2 x M 25



CHP 24 CS 1 x PG 21
MHP 24 CS225 2 x M 25



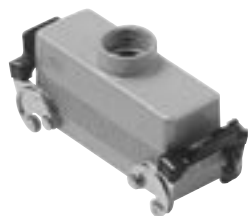
CHV 24 PG 21
MHV 24.25 M 25
MAV 24.32 M 32



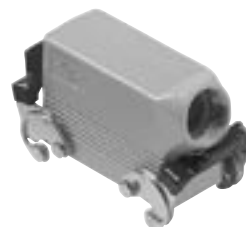
CHO 24 PG 21
MHO 24.25 M 25
MAO 24.32 M 32



CHV 24 G PG 21
CAV 24 G 29 PG 29
MHV 24 G 32 M 32



CHV 24 X PG 21
MHV 24 X25 M 25



CHO 24 X PG 16
MHO 24 X25 M 25



CHC 24 G



CHC 24

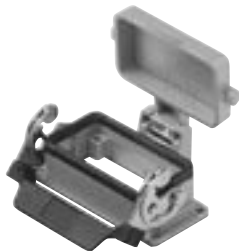
Inserts refer to page 9.

CH - CA Enclosures

Size 104.27



CHI 24 L



CHI 24 LS



CHP 24 L 1 x PG 16
MHO 24 L225 2 x M 25



CHP 24 LS 1 x PG 16
MHP 24 LS225 2 x M 25



CHV 24 L PG 16
MHV 24 L25 M 25
MAV 24 L32 M 32



CHO 24 L PG 16
MHO 24 L25 M 25
MAO 24 L32 M 32



CHV 24 LG PG 16
MHV 24 LG32 M 32



CHC 24 LG



CHC 24 L

Male Inserts

CNM 24 Q	24 Pin 16 amp 400 volt
CDM 64	64 Pin 10 amp 250 volt (crimp)
CDDM 108	108 Pin 10 amp 250 volt (crimp)
CXM 4 / 8	4 Pin 80 amp 690 volt + 8 pin 16amp 400 volt

For Crimp Pins refer to page 11

Female Inserts

CNF 24 Q	24 Pin 16 amp 400 volt
CDF 64	64 Pin 10 amp 250 volt (crimp)
CDDF 108	108 Pin 10 amp 250 volt (crimp)
CXF 4 / 8	4 Pin 80 amp 690 volt + 8 pin 16 amp 400 volt

CH - CA Enclosures

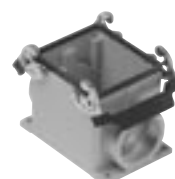
Size 77.62



CHI 32



CHI 32 CS



CHP 32 1 x PG 36
MHP 32.250 2 x M 50



CHV 32 PG 36
MHV 32.40 M 40



CHO 32 PG 36
MHO 32.40 M 40



CHV 32 G PG 36
MHV 32 G40 M 40



CHV 32 X PG 36
MHV 32 X40 M40



CHO 32 X PG 36
MHO 32 X40 M 40



CHC 32 LG



CHC 32



CHI 32 L



CHI 32 LS



CHP 32 L



CHP 32 LS 1 x PG
MHV 32 LS250 2 x M



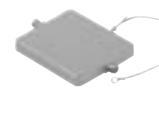
CHV 32 L PG 36
MHV 32 L40 M 40



CHO 32 L PG 36
MHO 32 L40 M 40



CHC 32 LG



CHC 32 L

Male Inserts

CNM 16 Q	16 Pin (1-16) 16 amp 400 volt
CNM 16 NQ	16 Pin (17-32) 16 amp 400 volt
CDM 40 x 2	80 Pin 10 amp 250 volt (crimp)
CDDM 72	72 Pin (1-72) 10 amp 250 volt (crimp)
CDDM 72N	72 Pin (73-144) 10 amp 250 volt (crimp)

For Crimp Pins refer to page 11

Female Inserts

CNF 16 Q	16 Pin (1-16) 16 amp 400 volt
CNF 16 NQ	16 Pin (17-32) 16 amp 400 volt
CDF 40 x 2	80 Pin 10 amp 250 volt (crimp)
CDDF 72	72 Pin (1-72) 10 amp 250 volt (crimp)
CDDF 72 N	72 Pin (73-144) 10 amp 250 v (crimp)

CH - CA Enclosures

Size 104.62



CHI 48 LS



CHP 48 LS29 1 x PG 29
MHP 48 LS50 1 x M 50



CHV 48 L PG 36
MHV 48 L40 M 40



CHO 48 L PG 36
MHO 48 L40 M 40

Male Inserts

Female Inserts

CNM 24 Q	24 Pin (1-24) 16 amp 400 volt
CNM 24 NQ	24 Pin (25-48) 16 amp 400 volt
CDM 64 x 2	128 Pin 10 amp 250 volt
CDDM 108	108 Pin (1-108) 10 amp 250 volt (crimp)
CDDM 108 N	108 Pin (109-216) 10 amp 240 volt (crimp)

CNF 24 Q	24 Pin (1-24) 16 amp 400 volt
CNF 24 NQ	24 Pin (25-48) 16 amp 400 volt
CDF 64 x 2	128 Pin 10 amp 250 volt
CDDF 108	108 Pin (1-108) 10 amp 250 volt (crimp)
CDDF 108 N	108 Pin (109-216) 10 amp 240 volt (crimp)

CRIMP PINS

Male Pins

Female Pins

Silver Plated

CDMA 0.3	0.14 - 0.37 mm ²
CDMA 0.5	0.5 mm ²
CDMA 0.7	0.75 mm ²
CDMA 1.0	1 mm ²
CDMA 1.5	1.5 mm ²
CDMA 2.5	2.5 mm ²

Silver Plated

C DFA 0.3	0.14 - 0.37 mm ²
C DFA 0.5	0.5 mm ²
C DFA 0.7	0.75 mm ²
C DFA 1.0	1 mm ²
C DFA 1.5	1.5 mm ²
C DFA 2.5	2.5 mm ²

Gold Plated

CDMD 0.3	0.14 - 0.37 mm ²
CDMD 0.5	0.5 mm ²
CDMD 0.7	0.75 mm ²
CDMD 1.0	1 mm ²
CDMD 1.5	1.5 mm ²
CDMD 2.5	2.5 mm ²

Gold Plated

C DFD 0.3	0.14 - 0.37 mm ²
C DFD 0.5	0.5 mm ²
C DFD 0.7	0.75 mm ²
C DFD 1.0	1 mm ²
C DFD 1.5	1.5 mm ²
C DFD 2.5	2.5 mm ²

CH - CA Enclosures

Size 49.16



CZI 15 L



CZI 15 LS



CZP 15 L 1 x PG 16
MZP 15 L25 1 x M 25



CZP 15 LS22 2 x PG 21
MZP 15 LS225 2 x M 25



CZV 15 L PG 16
MZV 15 L20 M 20



CZO 15 L PG 16
MZO 15 L20 M 20



CZC 15 L



CZC 15 LG

Male Inserts

CDAM	10	10 Pin 16 amp 250 volt
CDM	15	15 Pin 10 amp 250 volt (crimp)

Female Inserts

CDAF	10	10 Pin 16 amp 250 volt
CDF	15	15 Pin 10 amp 250 volt (crimp)

CH - CA Enclosures

Size 66.16



CZI 25 L



CZI 25 LS



CZAP 25 L PG 16
MZAP 25 L225 2 x M 25



CZAP 25 LS221 2 x PG 21
MZAP 25 LS225 2 x M 25



CZV 25 L PG 16
CZAV 25 L21 PG 21



CZO 25 L PG 16
CZAO 25 L21 PG 21



CZC 25 L



CZC 25 LG

Male Inserts

CDAM	16	16 Pin 16 amp 250 volt
CDM	25	25 Pin 10 amp 250 volt (crimp)
CDDM	38	38 Pin 10 amp 250 volt (crimp)

Female Inserts

CDAF	16	16 Pin 16 amp 250 volt
CDF	25	25 Pin 10 amp 250 volt (crimp)
CDDF	38	38 Pin 10 amp 250 volt (crimp)

For crimp pins refer to page 11.

CH - CA Enclosures

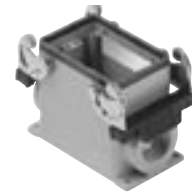
Size 66.40



CHI 50



CHI 50 CS



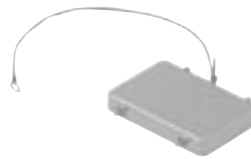
CHP 50.221 2 x PG 21
MHP 50.232 2 x M 32



CAV 50.21 PG 21
MAV 50.32 M 32



CAO 50.29 PG 29
MAO 50.32 M 32



CHC 50



CHC 50 G

Male Inserts

CDAM	16	16 Pin (1-16)	16 amp 250 volt
CDAM	16 N	16 Pin (17-32)	16 amp 250 volt
CDM	25 x 2	50 Pin	10 amp 250 volt (crimp)
CDDM	38	38 Pin (1-38)	10 amp 250 volt (crimp)
CDDM	38 N	38 Pin (39-76)	10 amp 250 volt (crimp)

For crimp pins refer to page 11.

Female Inserts

CDAF	16	16 Pin (1-16)	16 amp 250 volt
CDAF	16 N	16 Pin (17-32)	16 amp 250 volt
CDF	25 x 2	50 Pin	10 amp 250 volt (crimp)
CDDF	38	38 Pin (1-38)	10 amp 250 volt (crimp)
CDDF	38 N	38 Pin (39-76)	10 amp 250 volt (crimp)

ACCESSORIES



Trumpet Gland



HSK-Flex



HSK-K



CCPZ MIL



CCTP 10



CCINA



CCES



Thermoplastic
CK 03 I

Metal
CKA 03 I



Thermoplastic
CK 03 VS PG 11
MK V20 M 20

Metal
CKA 03 VS PG 11
MKA V20 M 20



Thermoplastic
CK 03 IAS

Metal
CKA 03 IAS



Thermoplastic
CK 03 VAS PG 11
MK VA20 M 20

Metal
CKA 03 VAS PG 11
MKA VA 20 M 20



Thermoplastic
CK 03 IAPS PG 11
MK IAP20 M 20

Metal
CKA 03 IAPS
MKA IAP20 M 20



Thermoplastic
CK 03 VGS PG 11
MKA VG20 M 20

Metal
CKA 03 VGS P 11
MKA VG20 M 20

Male Inserts

CKM	03	3 P & E 10 amp 250 volt
CKM	04	4 P & E 10 amp 250 volt
CDM	07	7 P & E 10 amp 250 volt (crimp)
CDM	08	8 Pin 10 amp 50 volt (crimp)

Female Inserts

CKF	03	3 P & E 10 amp 250 volt
CKF	04	4 P & E 10 amp 250 volt
CDF	07	7 P & E 10 amp 250 volt (crimp)
CDF	08	8 Pin 10 amp 50 volt (crimp)

For crimp pins refer to page 11.